



Gauri Components Private Limited

www.gauricomponents.com



COMPANY PROFILE

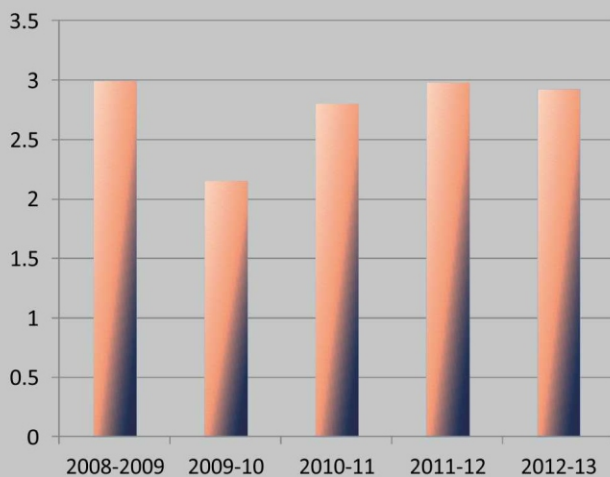


Message

Gauri Components Pvt. Ltd. is committed to providing the highest quality products, competitively priced, with services exceeding our customers expectations. We will continue to invest in facilities, systems and highly trained technical personnel providing added-value to our business relationships.

Shri S.K. Verma
Managing Director

ANNUAL TURNOVER (IN MILLION USD)



Company Profile



The company M/S GAURI COMPONENTS (P) LTD, formerly known as M/S G. ENGINEERING CO., started its business in September 1994.

The company specializes in manufacturing of hi-precision CNC machined & grinded components for number of Multinational companies .



Mr. Susheel Lall
Jt. MD

1. **ELECTRICAL POWER SECTOR :** GCPL is manufacturing & supplying various type of shafts for Marine, Industrial Alternators & Industrial Motors, for ABB LTD., ALSTOM LTD., LEROYSOMMERS LTD., CROMPTON GREAVES LTD., HAVELLS LTD., JYOTI LTD., ABG MOTORS, etc. These shafts involves CNC Turning, CNC Key way milling, Taper Drilling, Facing & Centering, Grinding etc. The size of the shafts range from \varnothing 20 mm to 700 mm & Length 100 mm to 4000 mm, weighing Approx. 0.5 Kg to 1500 Kg. Quality standard is proven as most of the supplies are DIRECT ON LINE.
2. **AUTOMOBILES :** Company is manufacturing & supplying almost 50 critical components to various Two wheelers giants, M/s HERO MOTORS LTD., LML LTD., MONTO MOTORS LTD. & also Engine Parts for 810 cc , 400cc and engines for ROTEX BOMBARDIER based in AUSTRIA
3. **SWITCH GEAR :** Various critical components for M/s CONTROL & SWITCH GEAR CO. LTD., TELEMECANIQUE & CONTROLS (I) LTD. These components include Rollers, Spacers, Extensions, Adopters & Special Shafts etc. These components are made of Stainless Steel, Phosphorus Bronze, Brass & Alloy Steel.
4. **INSTRUMENTATION & PNEUMATIC HAND TOOLS :** Niche components for Indo-US company INGERSOLL RAND INDUSTRIALTECHNOLOGIES for their Indian & US requirements. Stainless Steel Components to Dynisco Instruments
5. **ROLLING MILLS :** A vide variety of Rollers in D-2/D-3 Material (High Carbon, High Chromium) manufactured on CNC Turning Centers are being supplied to M/s MORGARDSHAMMAR (I) Ltd besides various type of precision bushes & Screws, for use in Steel Rolling Mills in India & abroad.
6. **EXPORTS :** Company is manufacturing different types of Electric/Motor shafts for GENERAL ELECTRIC Mexico, Canada & SKODA ELECTRIC based in Czech Republic. Company earned a special certificate of appreciation for quality & delivery from M/s SEMY DISTRIBUTING – USA, a Mercedes Benz's transmission company for the component supplied to them. 100% of the business is as Original Equipment (O.E. supplies). Over the years the company has developed its own ancillaries for different support functions like Forgings, Heat- treatment, Pre Machining & Sheet Metal Work etc. The company has a strong work force of 240 employees including high tech engineering personnel.

CNC Turning

upto Ø 600 mm x 3500 mm



CNC TMC

Ø 250 mm x 1500 mm

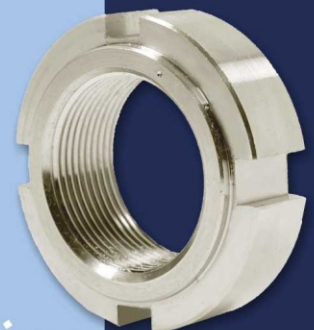
CNC Milling

upto Ø 600 mm x 4000 mm



CNC VMC

450 mm x 610 mm



Spline Hobbing

.5 module to 4 module
Dia upto \varnothing 200mm





Lathe

upto 1m to 4.4m

Single Spindle Automatic Lathe

A-25	3
A-40	1
A-60	1



Fabrication

WELDING MACHINE

- Mig Weld
- Tig Weld
- D.C. Weld
- Gas Cutting
- Profile Gas Cutter



Helping Machines

- Sheet Bending Machine (Upto 1500 mm)
- Auto Band Saw
- Tapping Machine
- Thread Roll Machine
- Vibro Deburring Machine
- Oven (450x350x300)
- Centerless Grinder (2mm to 70mm)

Casting



ANCILLARIES

M/S GAURI COMPONENTS has created its own Ancillary structure for support function operations. The company has Technical as well as Financial tie up in form of Machinery and Raw Material :

(A) FORGINGS

HAMMER (1 TON)
PRESS (300 TON)
BAND SAW
SHEARING M/C
ANNEALING FURNACE
DIE / TOOL ROOM

(B) HEAT TREATMENT

SALT BATH FURNACE
GAS CARBURIZING FURNACE
TEMPERING FURNACE
SUB ZERO COOLING GAS NITRIDING



U.S.P

- GREEN CHANNEL VENDOR - status for DIRECT ON LINE (D.O.L) supplies by M/S LEROY SOMMERS & JYOTI LTD.- for their Motor Shafts.
- DOL status for engine parts for Hero Motors Ltd (Two wheeler manufacturer).
- In house rejection for all manufactured components is recorded at 0.33% in current year , targeted at 0.25% in 2013-2014.
- The cumulative quantity rejection for total components was 0.63% for the 2007-2008, 0.42% for the year 2008-2009, 0.25% for the year 2009-2010, 0.15% for the year 2010-2011 & 0.1% for the year 2011-2012.

CORE-COMPETENCE

CNC Turnings :

- 20 Nos CNC & TMC with latest Fanuc Oi Tc & Siemens controller
- Precision spindles
- Precision LM guide ways movements repeatability 2 micron
- Facilities of live tooling
- Pneumatic chucking
- Hydraulic chucking,
- Special Chucking etc.
- Can Turn up to \varnothing 600 mm x Length 3500 mm

GRINDING :

- 09 Cylindrical Grinder.
- Can Grind \varnothing 700 mm x 3500 mm
- 02 Surface Grinder can grind \varnothing 350 mm x 600 mm
- 02 Center less Grinder can grind up to \varnothing 70 mm x 600 mm
- 02 Internal Grinder can grind \varnothing 50 mm x 80 mm

SPLINE ROLLING :

- 03 Hobbing up to 4 Module, 02 Gear Shaper, 01 Face teeth generation (ratchet).
- 02 Nos Plunge & Through feed spline rolling up to 1.25 M.
- 01 Nos Serration / Thread rolling.

SUPPORTING MACHINES/MEASUREMENT FACILITIES :

- Huge range of SPM, pre machining etc.
- All general measuring instruments incl. Height Master, Gauges, Surface Finish Tester, Profile Projector, Surface Plate, Magnifier, Rockwell, Brinell Testing, UT washing etc.



Industrial Automation



Water • Power • Progress



Škoda



EVERYDAY SOLUTIONS



Mercedes-Benz



Gauri Components (P) Ltd.

Manufacturer of Precision Engineering Components

C-18-21, Partapur Industrial Estate
Partapur, Meerut (U.P.) INDIA

Ph.: +91 121 2441492 • Fax : +91 121 2441568

E-mail : info@gauricomponents.com / gauri25com@yahoo.com

www.gauricomponents.com